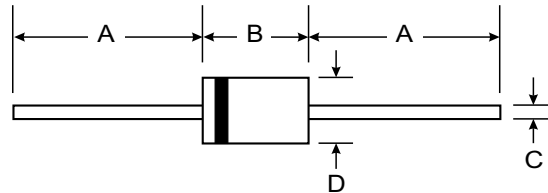


Features

- Silicon epitaxial planar diode
- High speed switching diode
- These diodes are also available in glass case
DO-34



Mechanical Data

- Case: DO-35, glass case
- Polarity: Color band denotes cathode
- Weight: 0.004 ounces, 0.13 grams
- Mounting position: Any

DO-35		
Dim	Min	Max
A	25.40	—
B	—	4.00
C	—	0.60
D	—	2.00
All Dimensions in mm		

Maximum Ratings and Electrical Characteristics @ $T_A = 25^\circ\text{C}$ unless otherwise specified

Type	$I_{(AV)}$ A	V_{RRM}	V_R V	I_{FSM} A	V_{FM}		$I_{RM}@V_{RRM}$		t_{rr} ns
		$(I=I_{RM})$			V_{FM} V	$I_{(AV)}$ A	$T_A=25^\circ\text{C}$		
		V					I_R μA	V_R V	
1SS141	0.11	40	35	0.3	1.2	0.1	0.01	20	50
1SS144	0.2	200	150	1.0	1.0	0.1	0.5	150	400
1SS145	0.2	300	250	1.0	1.0	0.1	0.5	250	400
1SS146	0.2	250	200	1.0	1.0	0.1	0.5	200	400
1SS147	0.2	200	150	1.0	1.0	0.1	0.5	150	400